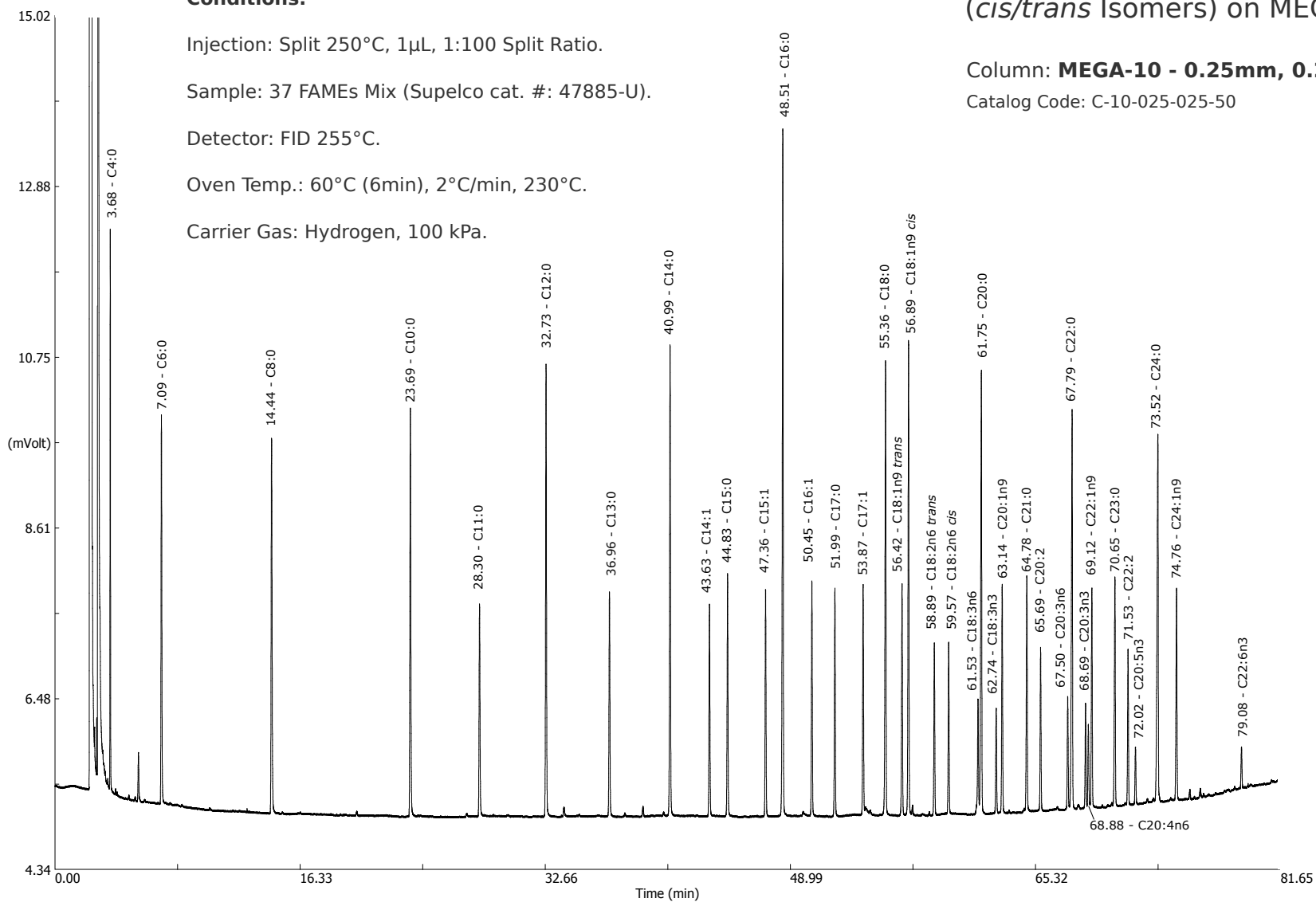


FAMES Mix
 (*cis/trans* Isomers) on MEGA-10 FAMES Column

Column: **MEGA-10 - 0.25mm, 0.25µm, 50m**
 Catalog Code: C-10-025-025-50

Conditions:

Injection: Split 250°C, 1µL, 1:100 Split Ratio.
 Sample: 37 FAMES Mix (Supelco cat. #: 47885-U).
 Detector: FID 255°C.
 Oven Temp.: 60°C (6min), 2°C/min, 230°C.
 Carrier Gas: Hydrogen, 100 kPa.



Zoom In to see the chromatogram in high definition and better appreciate the separation!

