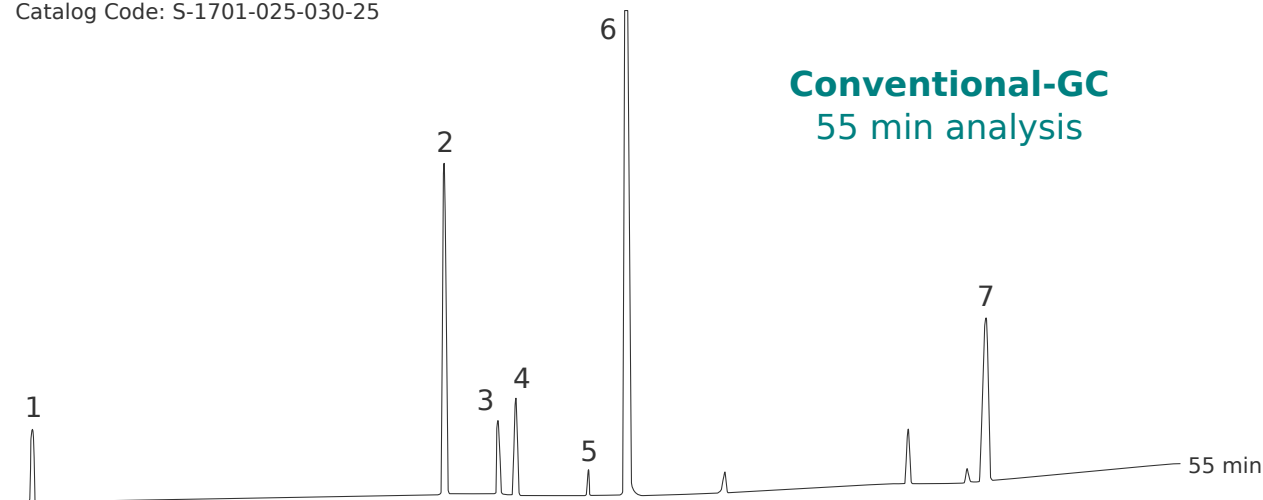


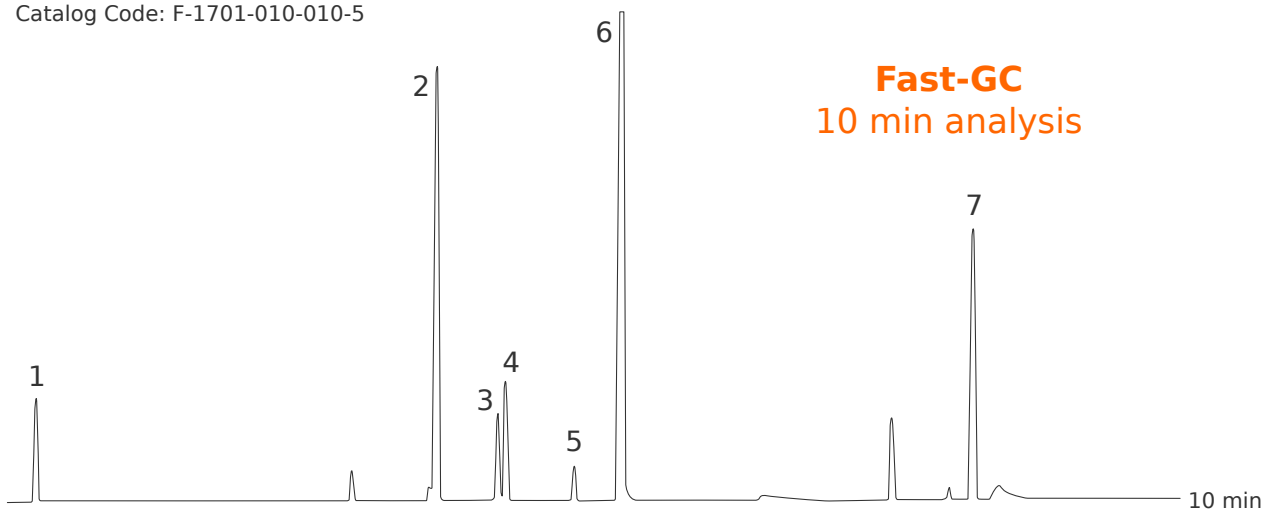
Column: **MEGA-1701, 0.25mm, 0.30µm, 25m**

Catalog Code: S-1701-025-030-25



Column: **MEGA-1701 FAST, 0.10mm, 0.10µm, 5m**

Catalog Code: F-1701-010-010-5



Chamomile Essential Oil

Comparison on MEGA-1701 phase

Conventional-GC Conditions:

Injection: Split 230°C, 1µL, 1:50 Split Ratio.

Sample Dilution: 1% in Cyclohexane.

Detector: FID 250°C.

Oven Temp.: 50°C (0.1min), 3°C/min, 250°C (5min).

Carrier Gas: Hydrogen, 1.5 mL/min.

Fast-GC Conditions:

Injection: Split 230°C, 0.5µL, 1:250 Split Ratio.

Sample Dilution: 1% in Cyclohexane.

Detector: FID 250°C.

Oven Temp.: 50°C (0.1min), 50°C/min, 250°C (5min).

Carrier Gas: Hydrogen, 0.5 mL/min.

Peaks:

1. Trans-Beta-Farnesene
2. Bisabolol Oxide B
3. Alpha-Bisabolol
4. Alpha-Bisabolone Oxide
5. Chamazulene
6. Bisabolol Oxide A
7. Spiroether

Acknowledgement: Prof. C.Bicchi, C.Brunelli et al. - Università di Torino, Dipartimento di Scienza e Tecnologia del Farmaco, Via Pietro Giuria, 9 - Torino - Italy.

