

## Chamomile Essential Oil

Column: **MEGA-WAX FAST - 0.10mm, 0.10 $\mu$ m, 5m**

Catalog Code: F-WAX-010-010-5

### Conditions:

Injection: Split 230°C, 0.5 $\mu$ L, 1:250 Split Ratio.

Sample Dilution: 1% in Cyclohexane.

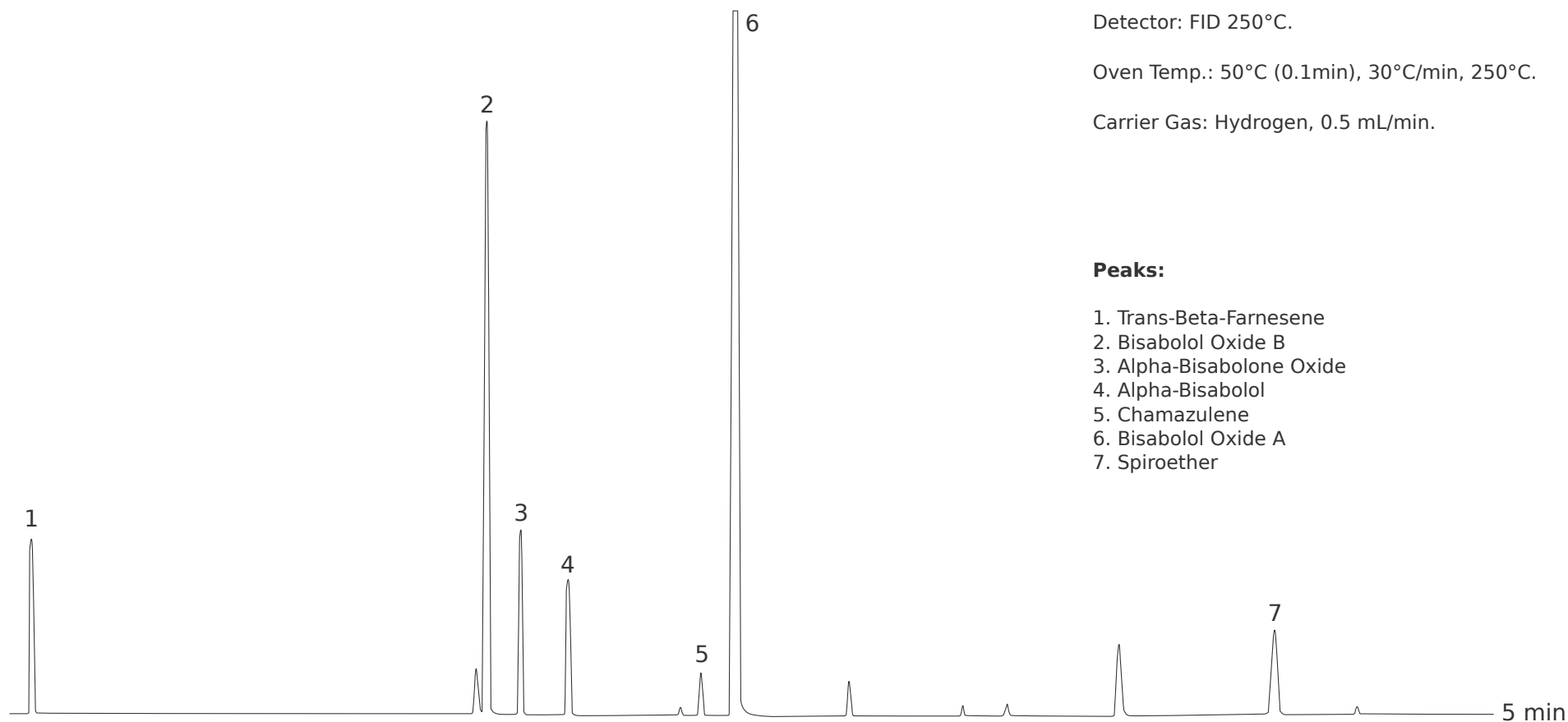
Detector: FID 250°C.

Oven Temp.: 50°C (0.1min), 30°C/min, 250°C.

Carrier Gas: Hydrogen, 0.5 mL/min.

### Peaks:

1. Trans-Beta-Farnesene
2. Bisabolol Oxide B
3. Alpha-Bisabolone Oxide
4. Alpha-Bisabolol
5. Chamazulene
6. Bisabolol Oxide A
7. Spiroether



Acknowledgement: Prof. C.Bicchi, C.Brunelli et al. - Università di Torino, Dipartimento di Scienza e Tecnologia del Farmaco, Via Pietro Giuria, 9 - Torino - Italy.

