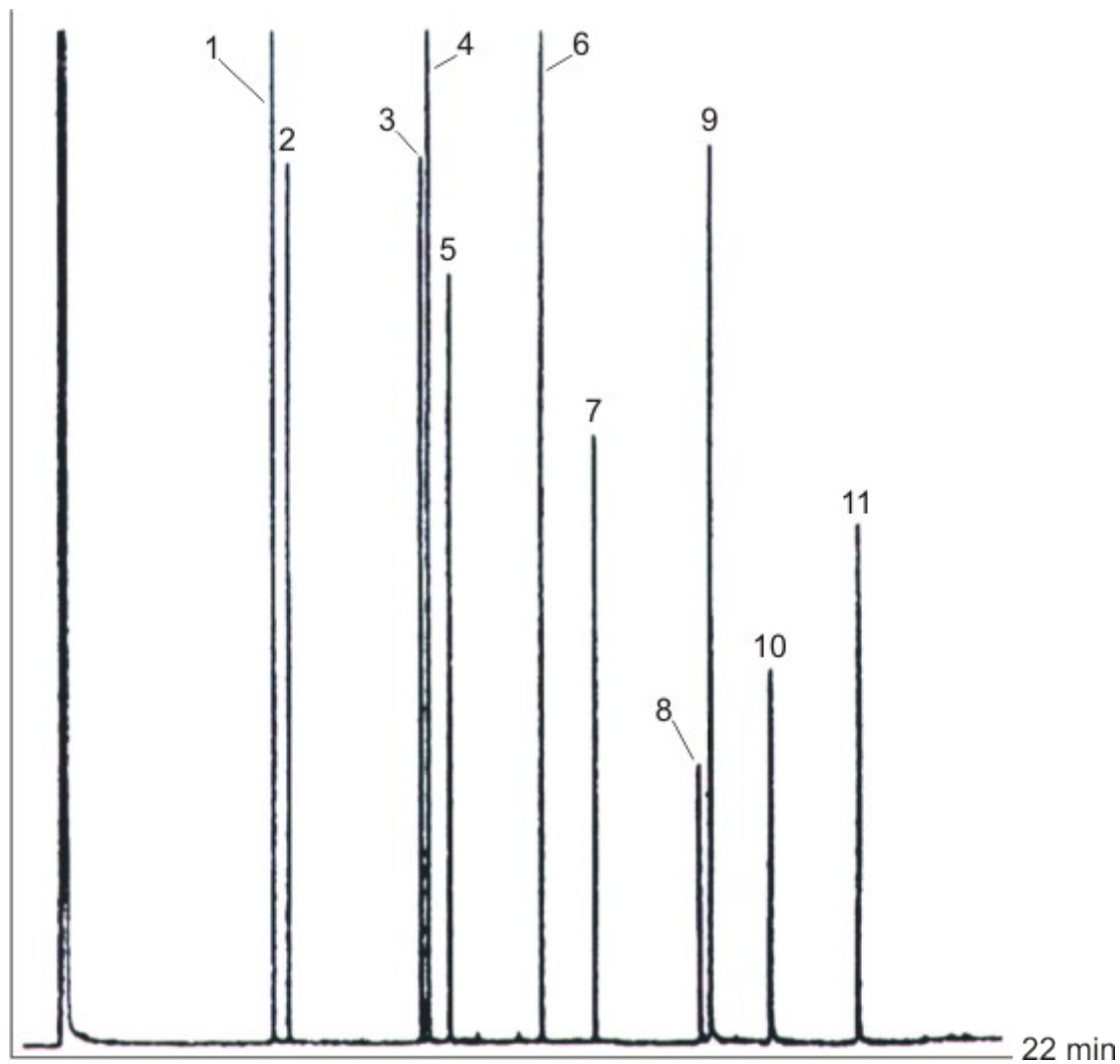


**PHENOLS – EPA METHOD 604**



**Column**

|        |         |
|--------|---------|
| Phase  | MEGA-5  |
| I.D.   | 0.32 mm |
| Film   | 1.0 µm  |
| Length | 25 m    |

**Chromatographic Conditions**

|                  |          |         |
|------------------|----------|---------|
| Injection        | Split    | 300°C   |
| Split Ratio      | 1:100    |         |
| Injection volume | 1.0 µL   |         |
| Oven             | T start  | 110°C   |
|                  | Rate     | 8°C/min |
|                  | T end    | 280°C   |
| Detector         | FID      | 300°C   |
| Carrier Gas      | Hydrogen | 60 kPa  |

**Peak Identification**

|    |                            |
|----|----------------------------|
| 1  | Phenolo                    |
| 2  | 2 – chlorophenol           |
| 3  | 2 – nitrophenol            |
| 4  | 2,4 – dimethylphenol       |
| 5  | 2,4 – dichlorophenol       |
| 6  | 4–chloro–3–methylphenolo   |
| 7  | 2,4,6 – trichlorophenol    |
| 8  | 2,4 – dinitrophenol        |
| 9  | 4 – nitrophenol            |
| 10 | 2–methyl–4,6–dinitrophenol |
| 11 | Pentachlorophenol          |