

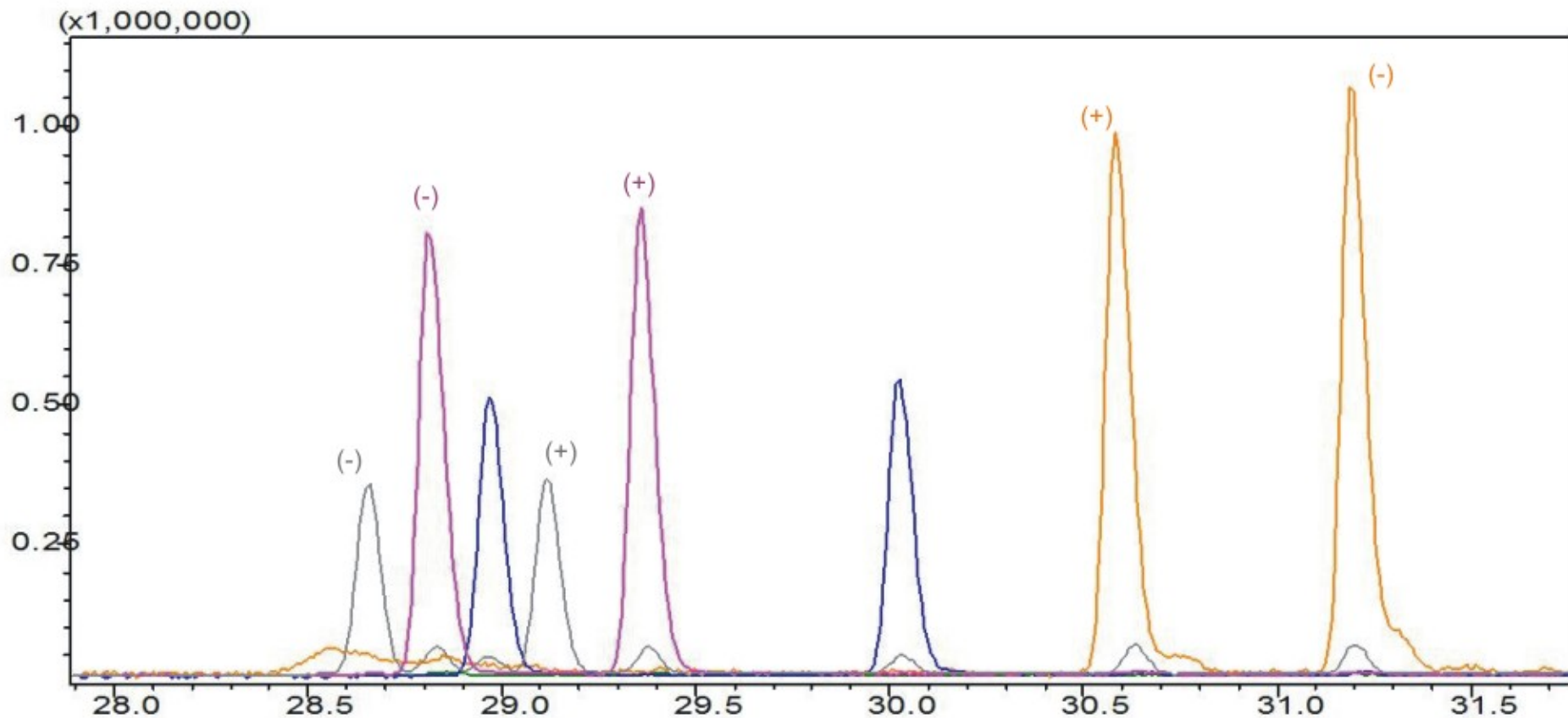
**NEOMENTHOL – ISOMENTHOL**

**Column**

Phase	MEGA-DEX DAC $\beta$
Inner Diameter	0.25 mm
Film Thickness	0.25 $\mu$ m
Length	25 m

**Identification**

	Neoisomenthol
	Neomenthol
	Isomenthol
	Menthol



Courtesy of Prof. C. Bicchi, C. Cordero – Università di Torino, Dipartimento Scienza e Tecnologia del Farmaco – Via P.Giuria, 9 – Torino