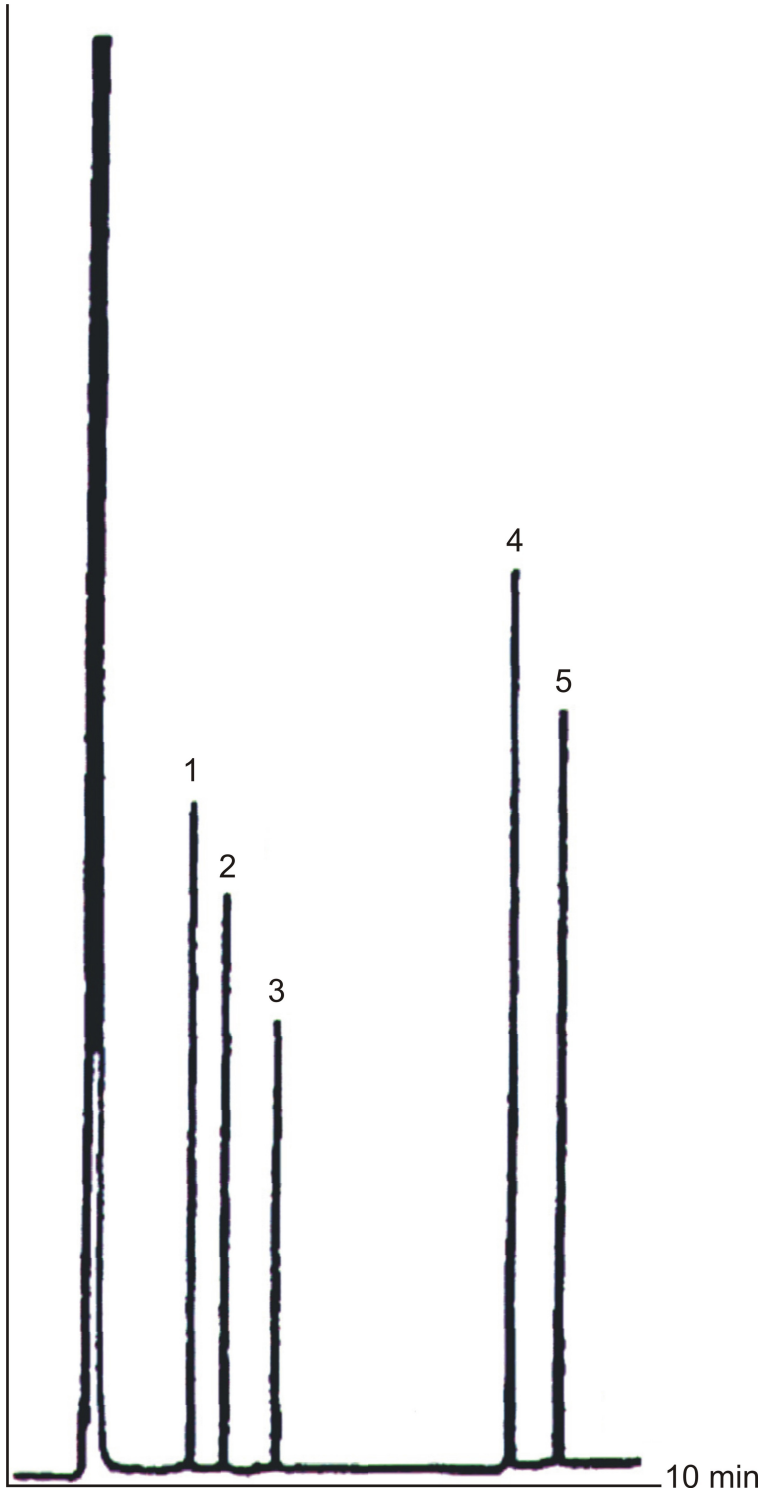


HALOETHERS – EPA Method 611/8110



Column

Phase	MEGA-5
I.D.	0.53 mm
Film Thickness	1.5 µm
Length	15 m

Chromatographic Conditions

Injection	Split	250°C
Split Ratio	1:50	
Injection volume	0.2 µL	
Oven	T start	100°C
	Rate	15°C/min
	T end	300°C
Detector	FID	300°C
Carrier Gas	Helium	20 kPa

Peak Identification

1	Bis (2-chloroethyl) ether
2	Bis (2-chloroisopropyl) ether
3	Bis (2-chloroethoxy) methane
4	4-chlorophenyl phenyl ether
5	4-bromophenyl ether