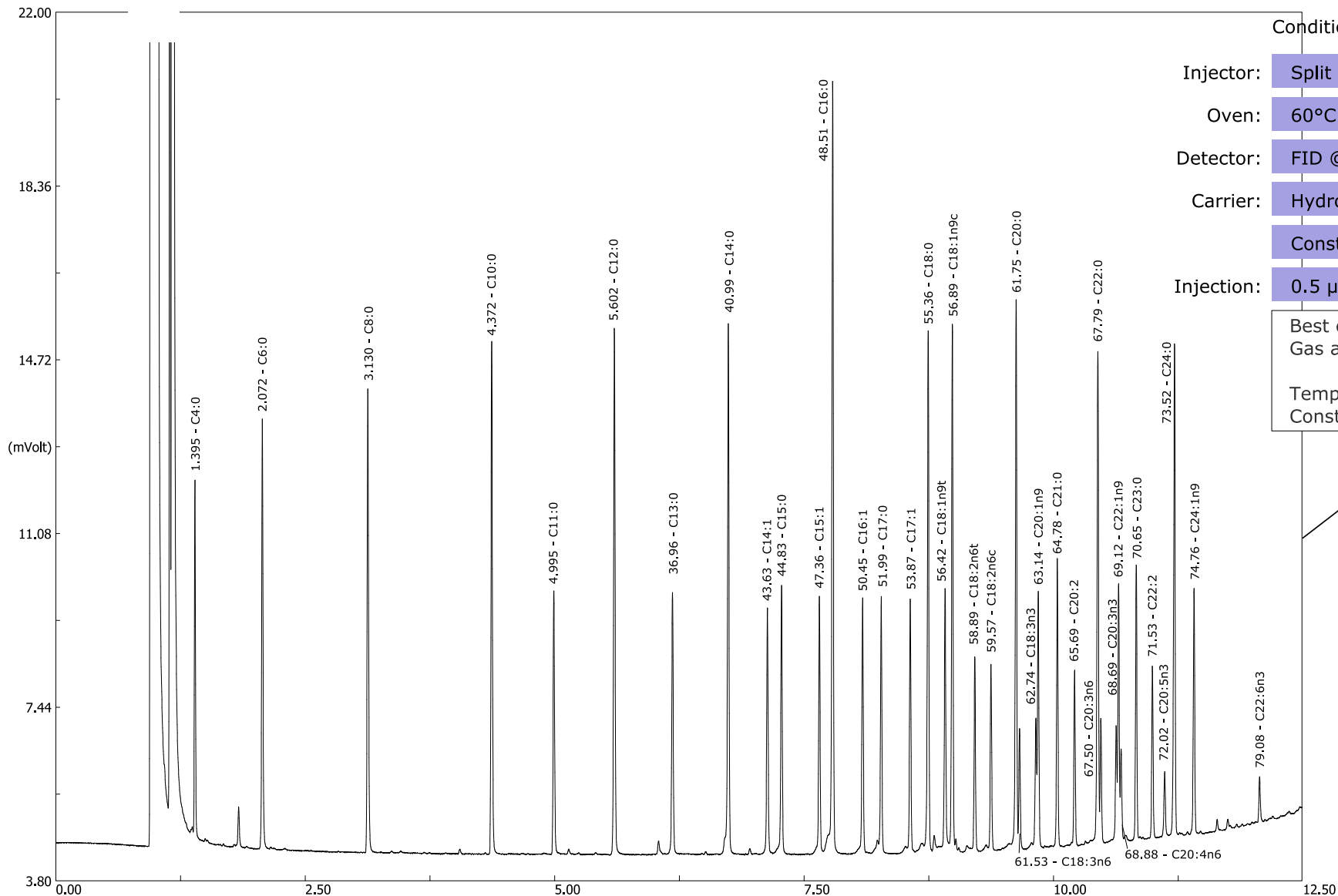


MEGA-10 (FAMES) FAST 0.20mm, 0.20µm, 30m - 37 FAMES Mix (Supelco cat. # 47885-U)



Conditions:

Injector:	Split @ 250°C
Oven:	60°C - 15°C/min - 250°C
Detector:	FID @ 255°C
Carrier:	Hydrogen @ 150kPa
	Constant Pressure
Injection:	0.5 µl, split ratio 1:250

Best conditions with Helium Carrier Gas are:

Temperature Rate: 10 - 12 °C/min
 Constant Pressure: 180 - 200 kPa



Zoom in by clicking here or with your Pdf viewer and browse the chromatogram in high definition to better appreciate the separation!