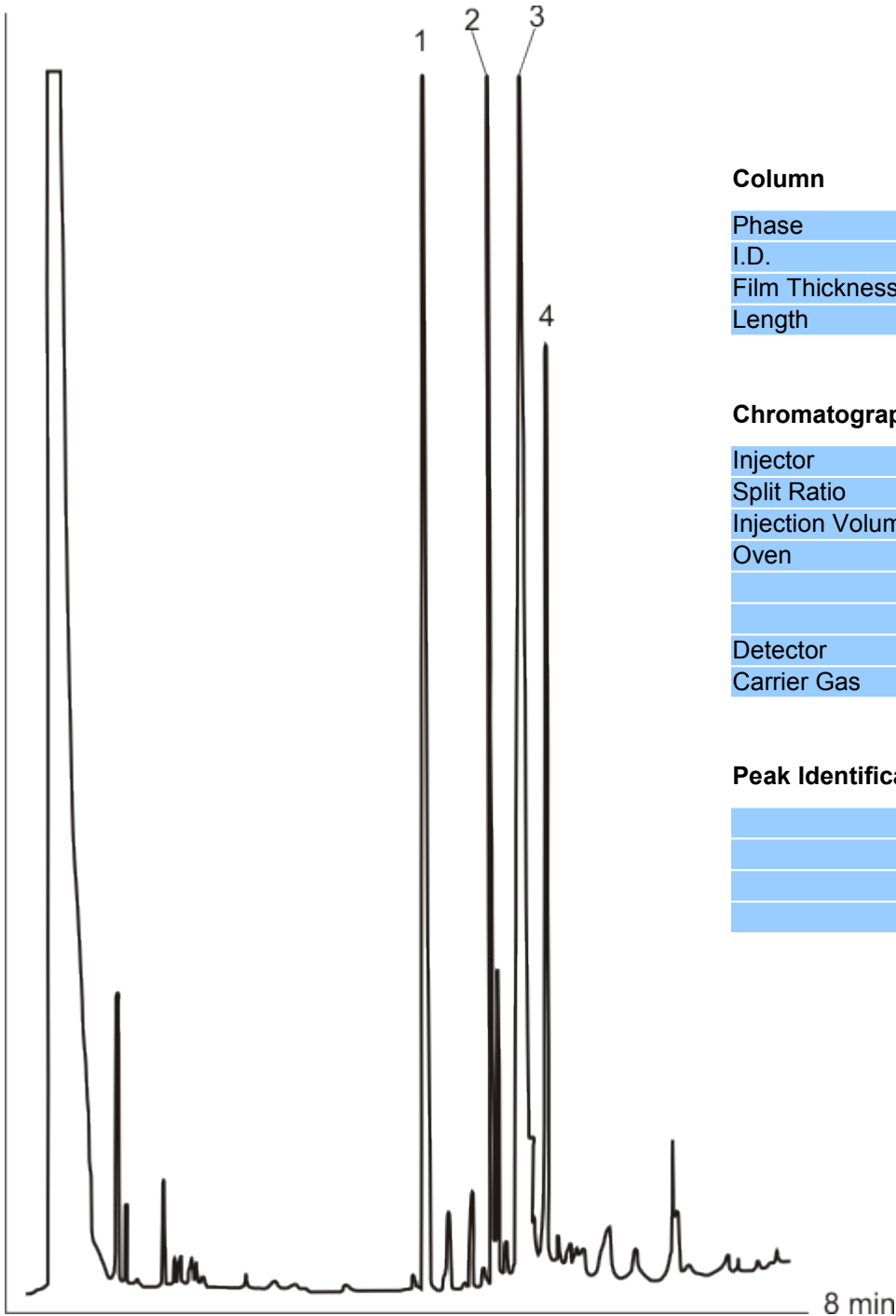


**DRUGS OF ABUSE**



**Column**

Phase	MEGA-1
I.D.	0.25 mm
Film Thickness	0.25 µm
Length	15 m

**Chromatographic Conditions**

Injector	Split	280°C
Split Ratio	1:50	
Injection Volume	1 µL	
Oven	T start	120°C
	Rate	25°C/min
	T end	310°C
Detector	FID	320°C
Carrier Gas	Hydrogen	30 Kpa

**Peak Identification**

1	Docosane (internal standard)
2	CBD Cannabidiol
3	THC Tetrahydrocannabidiol
4	CBN Cannabinol