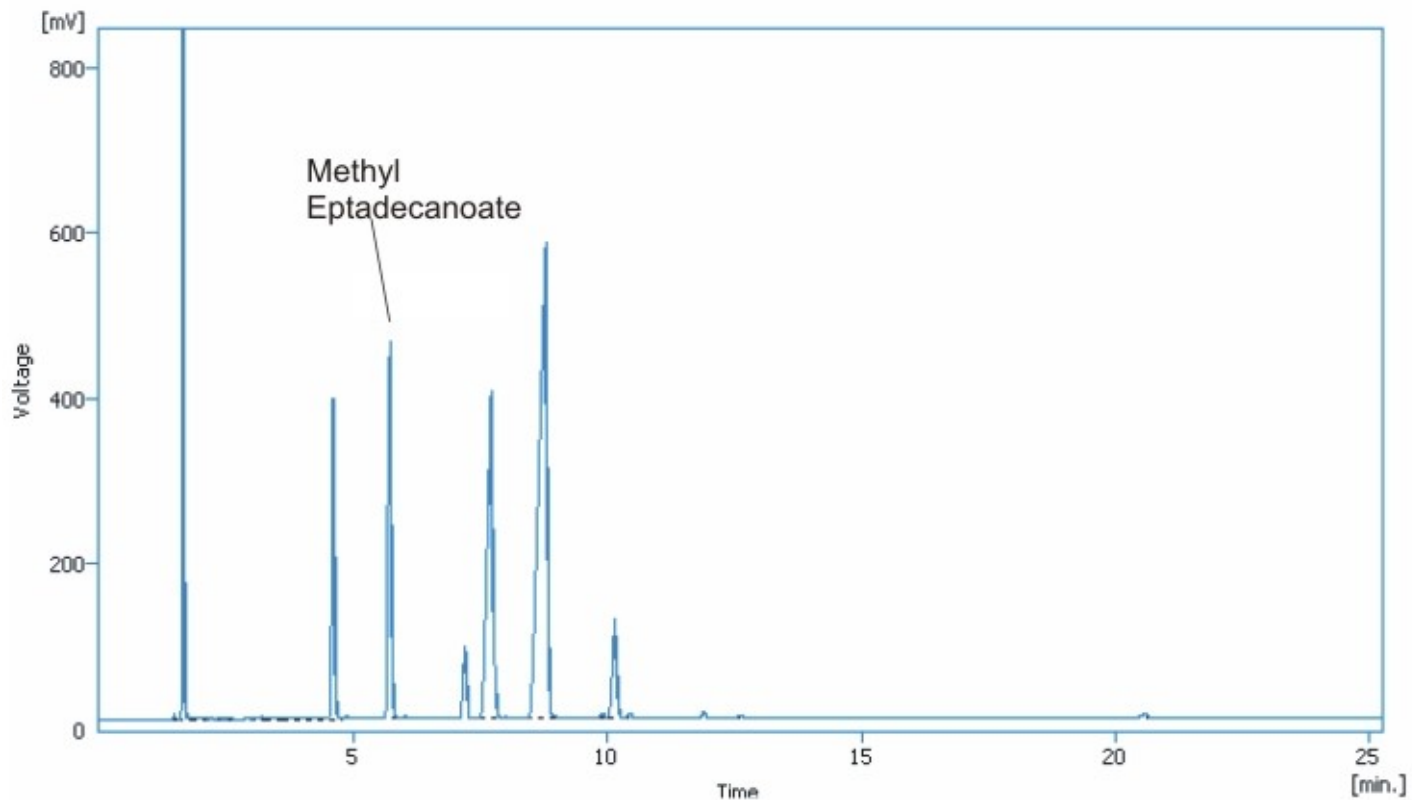


BIODIESEL – Determination of Esters and Linolenic Acid Methyl Esters contents (According to UNI EN ISO 14103:2003)



Column

Stationary Phase	MEGA-BIODIESEL103
I.D.	0.32 mm
Film Thickness	0.25 µm
Length	30 m

Instrument Conditions

Injector	Split	250°C
Split Ratio	1:50	
Volume injected	1 µL	
Oven	210°C	Isotherma
Detector	FID	250°C
Carrier Gas	Helium	3 mL/min

Sample

Standard Mixture:
10 mg/mL Methyl Eptadecanoate in Biodiesel

Result carried out with DANI MASTER GC